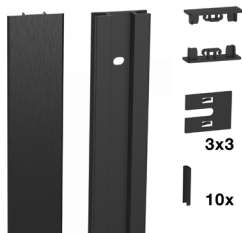


Pecasa

Help with planning and installation

You can find all the help you need on our website: recommended layouts and parts lists are available in the product finder, while the technical catalogue includes installation videos, installation instructions and CAD data.

Wall profile Standard



For the Pecasa shelf system

- Comes with a cover profile to hide the fittings

Set contains:

- 1 wall profile, incl. cover profile
- 10 cable clamps
- 2 cover caps (top/bottom)
- 3 spacer plates, 1 mm
- 3 spacer plates, 2 mm
- 3 spacer plates, 3 mm

Fittings not included. Fittings must be appropriate for the wall type.

Material: anodised aluminium, brushed | * cover profile is white coated

Type

Surface

Art. No.

Wall profile Standard
W x D x H: 56 x 18.5 x 2200 mm

white aluminium*

600.0408.01

natural aluminium

600.0408.20

black aluminium

600.0408.37

Cable cover



For the Pecasa wall profile Standard

- To cover the cables laterally in the cable duct

Two-part set

Material: silicone

Type

Surface

Art. No.

Cable covers (for the sides)
W x D x H: 7 x 12 x 2200 mm

grey

600.0410.18

black

600.0410.15

Shelf support Universal



For wood-composite shelves for the Pecasa shelf system

2 depth-adjustment screws
1 assembly material

- To be screwed to wood-composite shelves
- Can be positioned at any height
- Can be retrofitted

Material: powder-coated sheet steel (fine powder structure)

Load capacity depends on material type and dimensions.
Max. 80 kg per shelf support

Set contains:

- 1 shelf support, including clamp
- 2 cover plates (vertical and horizontal)

Type

Surface

Art. No.

Shelf support Universal
W x D x H: 70 x 202 x 89 mm

white

600.0386.91

black

600.0386.90

Shelf support for glass shelves



For glass shelves for the Pecasa shelf system

Material: powder-coated sheet steel (fine powder structure)

- To be glued to glass shelves
- Can be positioned at any height
- Can be retrofitted

Load capacity depends on glass type and dimensions.
Max. 30 kg per shelf support

Set contains:

- 1 shelf support, including clamp
- 1 chrome steel adapter plate, ground on the top and coated on the bottom; for gluing to the glass shelf
- 2 cover plates (vertical and horizontal)

Type

Surface

Art. No.

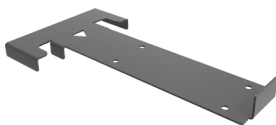
Shelf support for glass shelves
W x D x H: 70 x 204 x 85 mm

white

600.0385.91

black

600.0385.90



Type

Surface

Art. No.

Installation jig for gluing glass shelves to the shelf supports

silver

600.0411.12

Shelf support for solid wood shelves



For solid wood shelves for the Pecasa shelf system

- To be screwed to solid wood shelves
- Can be positioned at any height
- Can be retrofitted

Set contains:

- 1 shelf support, including clamp
- 2 cover plates (vertical and horizontal)

- 2 depth-adjustment screws
- 1 assembly material

Material: powder-coated sheet steel (fine powder structure)

Load capacity depends on material type and dimensions.
Max. 80 kg per shelf support

Type

Surface

Art. No.

Shelf support for solid wood shelves
W x D x H: 210 x 204 x 103 mm

white

600.0387.91

black

600.0387.90

Metal shelf



For the Pecasa shelf system

- Hidden shelf support built into shelf
- Can be positioned at any height
- Can be retrofitted

Set contains:

- 1 metal shelf with built-in clamp
- 1 vertical cover plate
- 2 depth-adjustment screws

Material: powder-coated sheet steel (fine powder structure)

Shelf thickness: 20 mm

Load capacity: max. 60 kg

Type

Surface

Art. No.

Metal shelf
W x D x H: 550 x 250 x 87 mm

white

600.0389.91

black

600.0389.90

Metal shelf
W x D x H: 550 x 400 x 87 mm

white

600.0390.91

black

600.0390.90

Metal shelf
W x D x H: 850 x 250 x 87 mm

white

600.0391.91

black

600.0391.90

Metal shelf
W x D x H: 850 x 400 x 87 mm

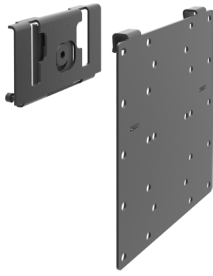
white

600.0392.91

black

600.0392.90

Universal bracket



For mounting screens, TVs, mirrors or pictures on the wall profile of the Pecasa shelf system

- Can be positioned at any height
- Can be retrofitted

Set contains:

- 1 clamp
- 1 universal wall mount with holes positioned according to the VESA standard

The wall mount can be screwed or stuck in place. Once attached to the wall mount, screens, mirrors and similar can be taken in and out of the system easily.

Material: powder-coated sheet steel (fine powder structure)

Load capacity: max. 25 kg

Type

Surface

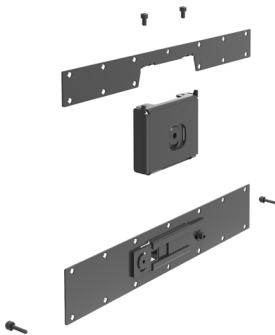
Art. No.

Universal bracket
W x D x H: 220 x 25 x 226 mm

black

600.0401.90

Unit support bracket



For cabinets for the Pecasa shelf system

- To be screwed to concealed unit backs (unit height ≥ 220 mm)
- Including horizontal angle adjuster
- Can be positioned at any height
- Can be retrofitted

Set contains:

- 1 clamp
- 2 unit supports (top and bottom)
- 2 depth-adjustment screws
- 1 assembly material

Material: powder-coated sheet steel (fine powder structure)

Use: cabinet
Depth: max. 400 mm
Load capacity: max. 120 kg

Use: desk
Depth: max. 570 mm
Load capacity: max. 75 kg

Load capacity depends on material type and dimensions.

Type

Surface

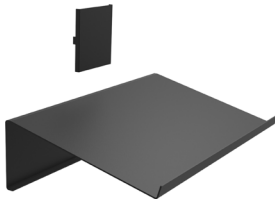
Art. No.

Unit support bracket
W x D x H: 434 x 28 x 190 mm

black

600.0388.90

Magazine/ shoe rack



For the Pecasa shelf system

- Can be fitted with the rack tilted downwards or upwards
- Rack tilted downwards: for shoes and magazines
- Rack tilted upwards: for shoes
- Hidden shelf support built into shelf
- Can be positioned at any height
- Can be retrofitted

Set contains:
1 shelf with built-in clamp
1 cover plate

Material: powder-coated aluminium sheet (fine powder structure)

Load capacity: max. 8 kg per shelf

Type

Surface

Art. No.

Magazine/shoe rack, type 550
W x D x H: 550 x 312 x 130 mm

white

600.0431.91

black

600.0431.90

Magazine/shoe rack, type 850
W x D x H: 850 x 312 x 130 mm

white

600.0432.91

black

600.0432.90

Shelf support with built-in clothes rail



For the Pecasa shelf system

- To be screwed to wood-composite shelves
- Compatible with all standard clothes hangers
- Can be positioned at any height
- Can be retrofitted

2 depth-adjustment screws
1 assembly material

Material: powder-coated sheet steel (fine powder structure)

Shelf depth: 250 mm
Shelf width: 550/850 mm

Set contains:

- 1 shelf support, including clamp, with built-in clothes rail
- 2 cover plates (vertical and horizontal)
- 2 end caps (clothes rail can be cut to the desired length)

Load capacity of clothes rail:
max. 34 kg

Total load capacity: depends on material type and dimensions of shelf.

Max. 80 kg per shelf support

Type

Surface

Art. No.

Shelf support with clothes rail, type 550
W x D x H: 550 x 285 x 114 mm

white

600.0393.91

black

600.0393.90

Shelf support with clothes rail, type 850
W x D x H: 850 x 285 x 114 mm

white

600.0394.91

black

600.0394.90

Hook rail with 2 hooks



For attaching to shelves for the Pecasa shelf system

- For wood shelves: screw in place (from behind)
- For glass or metal shelves: stick in place (from above)
- With 2 fixed hooks

Set contains:

- 1 hook rail with 2 hooks
- 2 pieces of double-sided adhesive tape for sticking the rail to glass or metal shelves

Material: powder-coated sheet steel (fine powder structure)

Load capacity: 6 kg per hook

Total load capacity of shelf: depends on material type and dimensions of shelf

Type

Surface

Art. No.

Hook rail with 2 hooks
W x D x H: 144 x 39 x 64 mm

white

600.0395.91

black

600.0395.90

Hook rail with 3 hooks



For attaching to shelves for the Pecasa shelf system

- For wood shelves: screw in place (from behind)
- For glass or metal shelves: stick in place (from above)
- With 3 fixed hooks

Set contains:

- 1 hook rail with 3 hooks
- 2 pieces of double-sided adhesive tape for sticking the rail to glass or metal shelves

Material: powder-coated sheet steel (fine powder structure)

Load capacity: 6 kg per hook

Total load capacity of shelf: depends on material type and dimensions of shelf

Type

Surface

Art. No.

Hook rail with 3 hooks
W x D x H: 216 x 39 x 64 mm

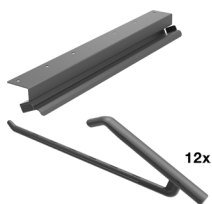
white

600.0396.91

black

600.0396.90

Trouser rack with 12 hangers



For screwing to wooden shelves

Set contains:

- 1 profile for hangers
- 12 hangers
- 1 assembly material

Material: powder-coated sheet steel (fine powder structure)

Shelf depth: 300 mm
Shelf width: 550 mm

Load capacity of trouser rack profile: max. 34 kg

Total load capacity of shelf: depends on material type and dimensions of shelf
Max. 80 kg per shelf support

Type

Surface

Art. No.

Trouser rack, type 550
W x D x H: 500 x 80 x 51 mm

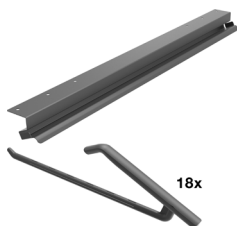
white

600.0397.91

black

600.0397.90

Trouser rack with 18 hangers



For screwing to wooden shelves

Set contains:

- 1 profile for hangers
- 18 hangers
- 1 assembly material

Material: powder-coated sheet steel (fine powder structure)

Shelf depth: 300 mm
Shelf width: 850 mm

Load capacity of trouser rack profile: max. 34 kg

Total load capacity of shelf: depends on material type and dimensions of shelf
Max. 80 kg per shelf support

Type

Surface

Art. No.

Trouser rack, type 850
W x D x H: 800 x 80 x 51 mm

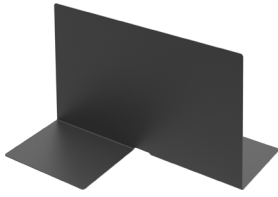
white

600.0398.91

black

600.0398.90

Bookend



Freestanding divider or support for books

Material: powder-coated sheet steel

Type

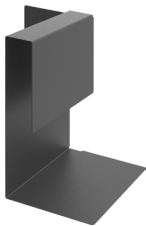
Surface

Art. No.

Bookend
W x D x H: 159 x 220 x 135 mm

white	600.0402.91
black	600.0402.90
mint green (while stocks last)	600.0402.38
garnet red (while stocks last)	600.0402.39

Letter rack



Freestanding divider for sorting letters and cards or for use as a bookend

Material: powder-coated sheet steel

Type

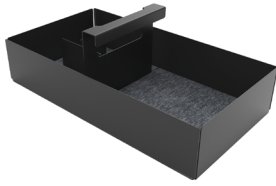
Surface

Art. No.

Letter rack
W x D x H: 179 x 122 x 202 mm

white	600.0403.91
black	600.0403.90
mint green (while stocks last)	600.0403.38
garnet red (while stocks last)	600.0403.39

Carry box



For tidying and storing work materials, office supplies, sewing tools, shoe-cleaning utensils, medicines, toiletries, and much more besides

Material: powder-coated sheet steel

- With felt inlay

Type

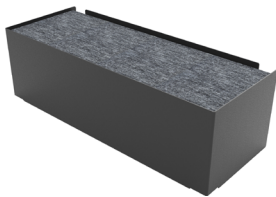
Surface

Art. No.

Carry box
W x D x H: 290 x 155 x 102 mm

white	600.0404.91
black	600.0404.90
mint green (while stocks last)	600.0404.38
garnet red (while stocks last)	600.0404.39

Cable organiser



For charging mobile phones and tablets and storing charging cables and power strips

Material: powder-coated sheet steel

- Box and cover made of metal with felt inlay
- Enough space for two EU-five-outlet power strips

Type

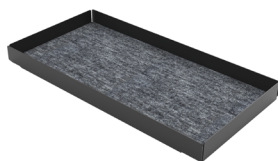
Surface

Art. No.

Cable organiser
W x D x H: 383 x 145 x 121 mm

white	600.0405.91
black	600.0405.90
mint green (while stocks last)	600.0405.38
garnet red (while stocks last)	600.0405.39

Pen tray



For storing office supplies, jewelry, medicines, and similar

Material: powder-coated sheet steel

- With felt inlay

Type

Surface

Art. No.

Pen tray

W x D x H: 241 x 121 x 21 mm

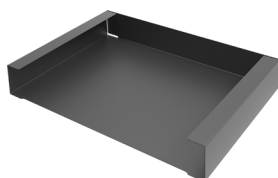
white

600.0406.91

black

600.0406.90

Paper tray



For sorting A4 sheets and folders

Material: powder-coated sheet steel

- Document trays can be stacked on top of one another or offset
- Includes non-slip strips

Type

Surface

Art. No.

Paper tray

W x D x H: 335 x 243 x 50 mm

white

600.0407.91

black

600.0407.90

mint green (while stocks last)

600.0407.38

garnet red (while stocks last)

600.0407.39



For installation videos,
installation instructions,
CAD data

and further information,
visit our website:
≡ www.peka.com